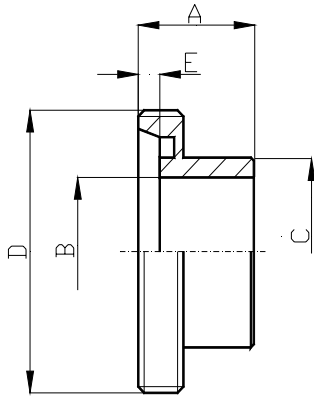


RACCORDERIA SERIE DIN 11851-52

DIN 11851-52 SERIAL

BOCCHETTONE FEMMINA A SALDARE

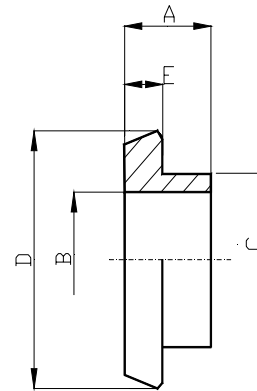
WELDING FEMALE CONNECTOR



DN	A	B	C
25	29	26	35
32	32	32	41
40	33	38	48
50	35	50	61
60	36	57	72
65	40	66	79
80	45	81	93
90	45	85	103
100	54	98	114

BOCCHETTONE MASCHIO A SALDARE

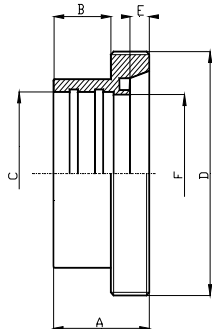
WELDING MALE CONNECTOR



DN	A	B	C
25	22	26	35
32	25	32	41
40	26	38	48
50	28	50	61
60	30	57	72
65	32	66	79
80	35	81	93
90	35	85	103
100	44	98	114

BOCCHETTONE FEMMINA A MANDRINARE

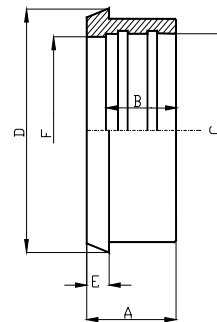
WELDING FEMALE CONNECTOR



DN	A	B	C
25	29	15	28,2
32	32	18	34,2
40	33	20	40,2
50	35	22	52,2
65	40	25	70,3
80	44	28	a rich.
90	44	28	a rich.
100	53	35	a rich.

BOCCHETTONE MASCHIO A MANDRINARE

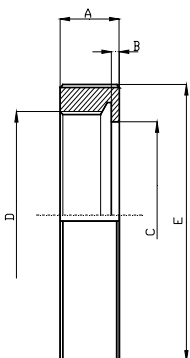
WELDING MALE CONNECTOR



DN	A	B	C
25	22	15	28,2
32	25	18	34,2
40	26	20	40,2
50	28	22	52,2
65	32	25	70,3
80	35	28	a rich.
90	35	28	a rich.
100	42	35	a rich.

GIRELLA

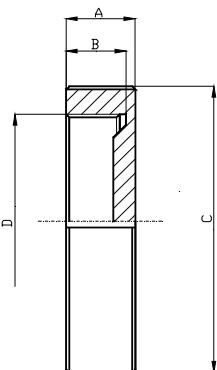
NUT



DN	A	B	C
25	21	3	36
32	21	3	42
40	21	3	49
50	22	3	62
60	24	4	73
65	25	4	80
80	30	4	94
90	30	4	104
100	31	5	115

GIRELLA CIECA

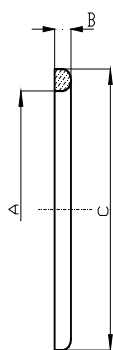
CAP



DN	A	B	C
25	21	18	63
32	21	18	70
40	21	18	78
50	22	19	92
65	25	21	112
80	30	26	127
90	30	26	138
100	31	26	148

GUARNIZIONE IN GOMMA

RUBBER SEAL



DN	A	B	C
25	30	5	40
32	36	5	46
40	42	5	52
50	54	5	64
65	71	5	81
80	85	5	95
90	94	5	104
100	104	5	114

Tutta la serie DIN 11851-5 è disponibile in acciaio inox AISI 304L - AISI 316L
 All DIN 11851-52 serial is available in stainless steel AISI 304L - AISI 316L